

Low Cost Solution

FEATURE

- Allows RS-232/422/485 serial devices to be connected to Ethernet network via transparent data conversion and operates as an Ethernet node. Serial communication speed is up to 115.2 kbps.
- Supports ARP, ICMP, TCP, UDP, IP, DHCP, HTTP, Modbus/TCP, and 10Base-T Ethernet standard
- Supports Web Based interface for fast configuration without special software, also command mode for parameters setting by application software.
- Supports Client/Server applications & 3 sockets in Server mode
- Supports Winsock networking programming and optional "Virtual serial ports" driver for windows application program



The Newest

ORDER INFORMATION

PL-SNet- Socket No. - DI/DO (optional) - Aux. Powered

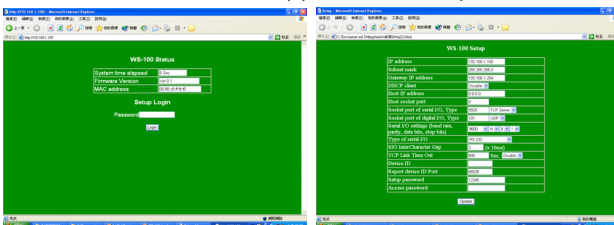
CODE	SOCKET NO.	CODE	DI/DO(optional)	CODE	AUX. POWERED
1	1 socket (Client/Server)	22	2 DI & 2DO	D09	DC 9V (with AC 100~240V adaptor)
3	3 sockets (Server only)	NN	None		

D24 DC 24V

SPECIFICATION

- CPU: 8051
- Network interface: 10 BASE-T, RJ-45 connector
- Protocol: ARP, ICMP, TCP, UDP, IP, DHCP Client, HTTP, Modbus/TCP Master/Slave, Modbus/RTU Master/Slave
- Ethernet channel(Socket): PL-SNet-1: 1 socket (Client/Server)
PL-SNet-3: 3 socket (Server only)
- Serial port: RS-232 / RS-422 / RS-485, software selectable
- Serial communication: Transmission speeds: 300~115200 bps
Data bits: 7, 8
Parity: None, Even, Odd Auto-ID scanners
Stop bits: 1, 2
Flow control: RTS/CTS
- LED indication: SYS: Red high bright round LED
Link: Green high bright round LED
RX: Green high bright round LED
TX: Red high bright round LED

- Configuration: [Web Browser, Windows utility via Ethernet](#)
Set up password & Access password settable



APPLICATION

Data collection & security terminals

- Access Control Terminals
- Security Devices
- Time Recorders
- Warehouse Terminals
- Shop floor automation Terminals

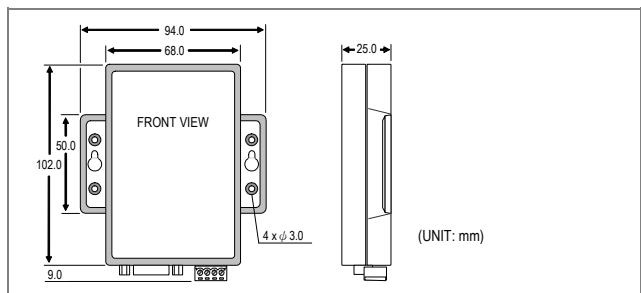
Remote Sensors & Meters

- Power monitors
- Power meters
- Environmental monitors
- Temperature monitors
- Data loggers 13816695992 64050883

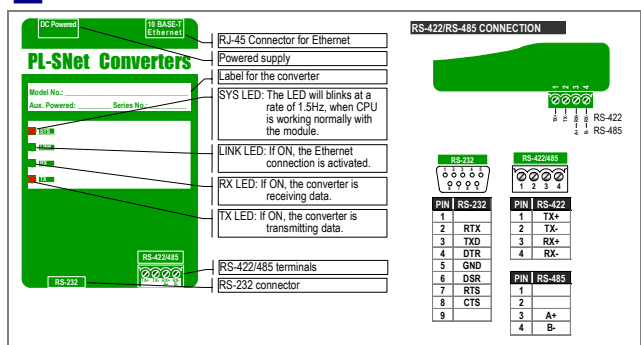
Auto-ID Scanners

- Barcode Scanners
- Magnetic Card Readers
- RFID Readers

DIMENSIONS



FRONT PANEL & CONNECTION DIAGRAM



Power

- Power Supply: DC 9V (with AC 100~240V adaptor)
- Power consumption: \leq 1W

Environmental

- Operating temp.: 0~55 °C
- Operating relative humi.: 20~95 %RH, non-condensing
- Storage temperature: -10~70 °C

Mechanical

- Case Materiel: ABS fire-protection (UL 94V-0)
- Mounting: Surface mounting
- Terminal block: Plastic NYLON 66 (UL 94V-0)
- Weight: 150g