

High Performance Solution

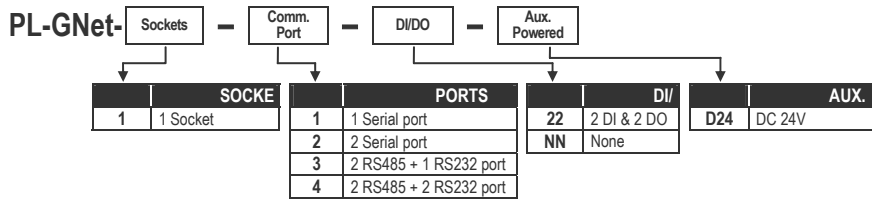
FEATURE

- ARM7 with 256KB Flash and 8KB RAM embedded flash, external 256KB Flash & 256KB SRAM
- 10/100M Ethernet Interface, up to 40MHz operation speed
- Super I/O with 4 port UART
- Build in RTOS(Real Time Operation System), can support up to 64 tasks
- Supports TCP/IP with socket layer API & UART serial I/O API



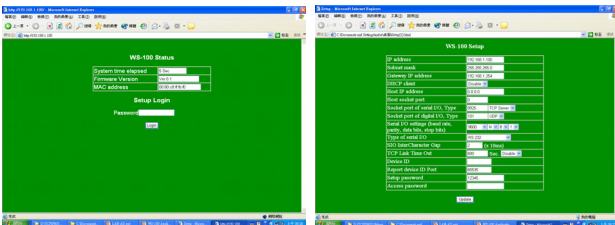
The Newest

ORDER INFORMATION



SPECIFICATION

- **CPU:** ARM7 with 256KB FLASH and 8KB RAM embedded flash
Up To 40MHz operation speed
- **Hard Ware:** 256KB External Flash & 256KB External SRAM
Super I/O with 4 Port UART
- **Soft Ware:** Build in RTOS(Real Time Operation System)
Support TCP/IP with socket layer API,
UART serial I/O API
Other System API for user programming
- **LED indication:** SYS: Red high bright round LED
Link: Green high bright round LED
RX: Green high bright round LED
TX: Red high bright round LED
- **DI/DO(optional):** 2 DI & 2 DO available in option
- **Debug and Programming Interface:** Support XMODEM and TFTP Protocol for user program download
RS232 or Telnet Serial Terminal, with a lot of User command supporting
TCP STDERR Output Interface for user debug message output with HyperTerminal
HTTP for System Configuration

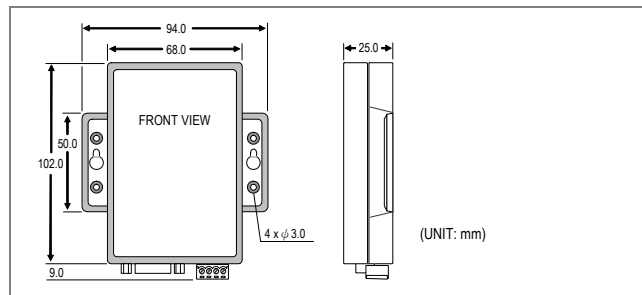


- **Power:**
- Power Supply: DC 24V
- Power consumption: $\leq 1W$

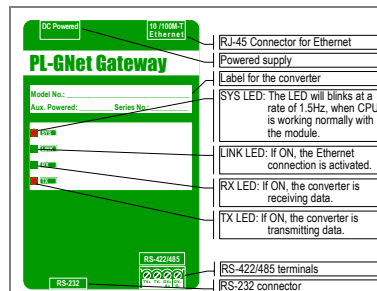
- **Environmental:**
- Operating temp.: 0~55 °C
- Operating relative humi.: 20~95 %RH, non-condensing
- Storage temperature: -10~70 °C

- **Mechanical:**
- Case Materiel: ABS fire-protection (UL 94V-0)
- Mounting: Surface mounting
- Terminal block: Plastic NYLON 66 (UL 94V-0)
- Weight: 150g

DIMENSIONS



FRONT PANEL & CONNECTION DIAGRAM



CONNECTION and PIN Description

9 PIN BLOCK		
1	RXD1	RS232 Data Input
2	TXD1	RS232 Data Output
3	RTS1	RS232 Request to Send
4	CTS1	RS232 Clear to Send
5	GND	RS232 Ground
6	RXD2/DX+	RS232 Data Input / RS422/RS485 DX+
7	TXD2/DX-	RS232 Data Output / RS422/RS485 DX-
8	RTS2/TX1	RS232 Request to Send / RS422 TX+
9	CTS2/TX-	RS232 Clear to Send / RS422 TX-
13 PIN BLOCK		
1	RXD3/DX+	RS232 Data Input / RS422/RS485 DX+
2	TXD3/DX-	RS232 Data Output / RS422/RS485 DX-
3	RTS3/TX+	RS232 Request to Send / RS422 TX+
4	CTS3/TX-	RS232 Clear to Send / RS422 TX-
5	GND	RS232 Ground
6	RXD4/DO1	RS232 Data Input / Digital Output
7	TXD4/DO2	RS232 Data Output / Digital Output
8	RTS4/DI1	RS232 Request to Send / Digital Input
9	CTS4/DI2	RS232 Clear to Send / Digital Input
10	IOGND/NC	
11	IO24+/NC	
12	GND	
13	+24V	

2006/11/23 Amend: PL-GNet is no 3 sockets version. / Wrong description for connection and PIN.