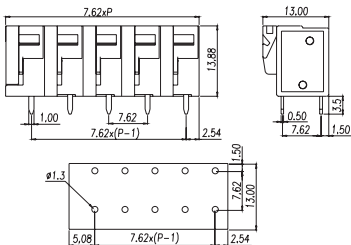





## 142V-..P3



Pitch:7.62mm

Approval			
Technical Data		UL	IEC
Rated voltage		300V	750V
Rated current		10A	17.5A
Conductor cross-section, solid (AWG/mm <sup>2</sup> )		22~14	0.5~1.5
Conductor cross-section, flexible (AWG/mm <sup>2</sup> )		22~14	0.5~1.5
Rated impulse voltage			6KV
Torque(N-m)			
Screw			
Wire strip length		9~10mm	
Pole	Cat.No.		
02	142V-02P3		
:	:		
:	:		
24	142V-24P3		