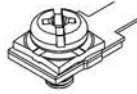
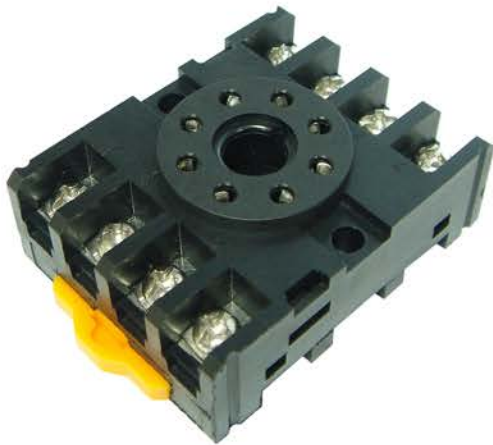


CSM-A08F1



Main Feature

- Snap-on mounting on DIN-rail.
- Screw mounting.
- Pozidrive screw with rising clamp terminals.
- Logical layout of input-/output connection.
- Metal clip with ejection function for relays of 50mm height.
- DIN-rail sockets and accessories: RoHS compliance (Directive 2002/95/EC).
- Socket with screw-type terminal for DIN-rail mounting.

Specifications

Rated current.....10A
 Rated voltage / max. Switching voltage AC..150/300VAC
 Dielectric strength coil-contact circuit.....2,000V_{rms}
 Insulation resistance (at 50VDC).....1,000MΩ min.
 Material group of insulation parts.....≥ IIIa
Insulation to IEC 60664-1

Type of insulation coil-contact circuit.....basic
 Open contact circuit.....functional
 Rated insulation voltage.....250V
 Pollution degree.....2
 Rated voltage system.....230/400V
 Over voltage category..... III

RoHS Directive 2002/95/EC

Sockets, retainers and marking tag.....compliant
 Degree of protection DIN 40050.....IP20
 Ambient temperature range.....-25... +55 °C
 Terminals.....screw
 Terminal screw torque acc. IEC 61984.....0.5Nm
 Max.....0.7Nm

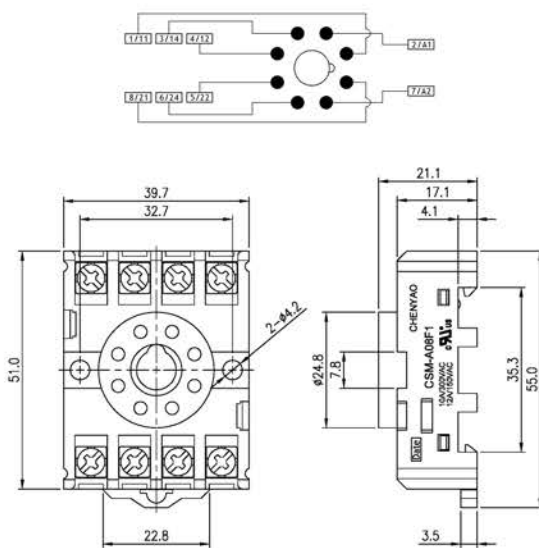
Wire cross section

Single wire.....2X2.5mm²
 Fine wire.....2X2.5mm²
 With bootlace crimp (DIN 46228/1).....2X1.5mm²
 Insertion cycles.....A (10)
 Max. Insertion Force total.....100N
 Mounting distance.....0, dense packing
 Weight.....40g
 Packaging unit.....10 pcs.

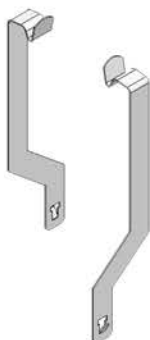


UL/CUL No: E306487

Dimensions



Accessories



Order Information

CSM - A 08 F1

Insulation levels	F1 (for one level) F2 (for two levels)
Relay terminals	08 (for 08 terminals relay) 11 (for 11 terminals relay)
Contact form	A (for stockade type) B (with finger protection)
Item	CSM