



ELECTRONICS TESTING CENTER, TAIWAN
 ADDRESS: NO.8 LANE 29, WENMING RD.,
 LESHAN TSUEN, GUISHAN SHIANG,
 TAOYUAN COUNTY 33383, TAIWAN.
 TEL:03-3280026 FAX:03-3276127
 http://www.etc.org.tw

ETC TEST REPORT

Ind. Ser. No. : 08-08-EAT-025-E00
 Applicant : Dinkle International CO., LTD.
 Address : No.3, Min An Rd., Hsin Chuang, 242
 Taipei Hsien, Taiwan.
 Commodity : Connector
 Model : MSTB25 、 2EHDR-05P
 Quantity : 3 pcs/model ; Total : 6 pcs
 Date of Receipt : Aug. 08, 2008
 Date of Testing : Aug. 12, 2008~ Aug. 14, 2008
 Ambient Environment : Temp. 25°C, R.H. 55%
 Testing Item :

1. Thermal shock test
2. Low temperature storage test

Approved by

Sophia Liu

 Sophia Liu



TEST REPORT

Ind. Ser. No. 08-08-EAT-025-E00

Testing Conditions : According to applicant's specifications.

1. Thermal shock test

Test sample : MSTB25#1 、 2EHDR-05P#1

Test setup : Refer to Fig.1

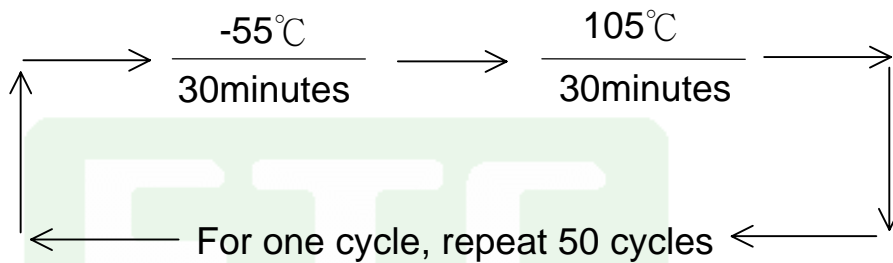


Fig. 1 Thermal shock test

TEST REPORT

Ind. Ser. No. 08-08-EAT-025-E00

2. Low temperature storage test

Temperature : -40°C

Duration : 4 hour

Test sample : MSTB25#2、MSTB25#3、2EHDR-05P#2、2EHDR-05P#3

Test setup : Refer to Fig. 2

Remark : Measure push-off force after “Low temperature storage test”.



Fig. 2 Low temperature storage test



Electronics Testing Center, Taiwan
www.etc.org.tw

TEST REPORT

Ind. Ser. No. 08-08-EAT-025-E00



※Push-off test

Rate : 12.5mm / minute

Measurement : Record the push-off force when the body of testing sample had a breakdown.

Test setup : Refer to Fig. 3

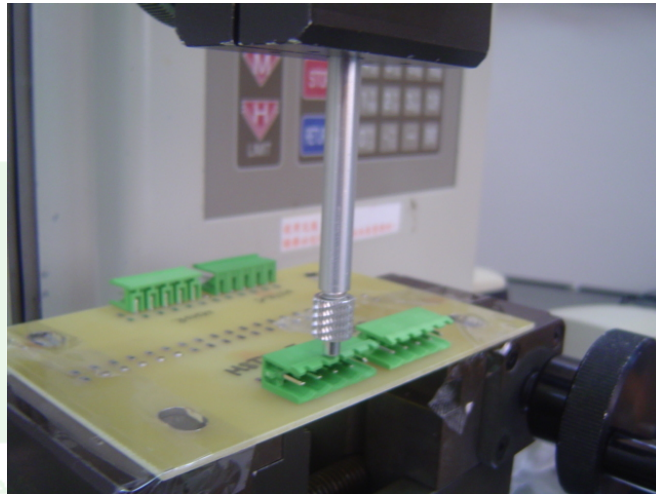


Fig.3 Push-off test

Testing Equipment :

Name	Model	Cal. Date	Due Date
Thermal Shock Chamber	ESPEC TSA-71H	Aug. 07, 2008	Aug. 06, 2009
Terminal Strength Tester	ALGOL MAX-1kN-B	Jan. 02, 2008	Jan. 01, 2009
T&L Chamber	TABAI MC-710	Dec. 24, 2007	Dec. 28, 2008

TEST REPORT

Ind. Ser. No. 08-08-EAT-025-E00

Testing Result :

1. Thermal shock test

Date of testing : Aug. 14, 2008

Measure environment : Temp.25°C, R.H.55%

Sample No.	Visual inspection
MSTB25#1	No damage.
2EHDR-05P#1	No damage.

2. Low temperature storage test

Date of testing : Aug. 12, 2008

Measure environment : Temp.25°C, R.H.55%

Sample No.	Visual inspection
MSTB25#2	No damage.
MSTB25#3	No damage.
2EHDR-05P#2	No damage.
2EHDR-05P#3	No damage.

※Push-off test

Date of testing : Aug. 12, 2008

Measure environment : Temp.25°C, R.H.55%

Sample No.	Push-off test (kgf)
MSTB25#2	22.50
MSTB25#3	36.10
2EHDR-05P#2	22.17
2EHDR-05P#3	26.41

Note : Sample condition after push-off test refer to Fig. 3~Fig. 6

TEST REPORT

Ind. Ser. No. 08-08-EAT-025-E00

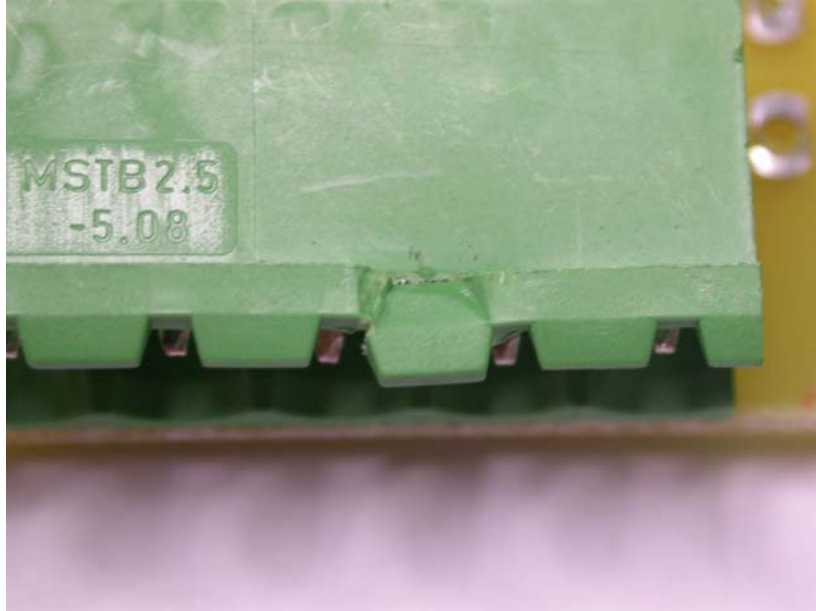


Fig. 3 : Sample MSTB25#2

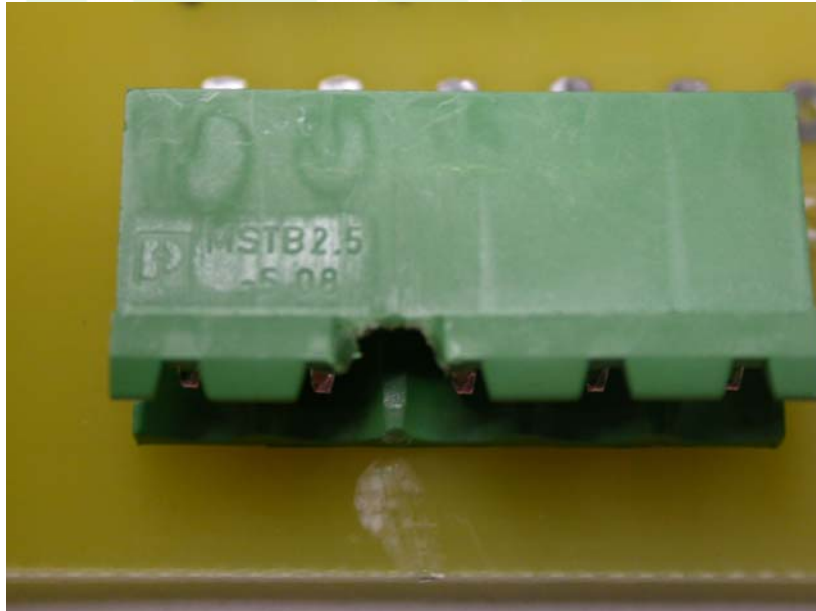


Fig. 4 : Sample MSTB25#3

TEST REPORT

Ind. Ser. No. 08-08-EAT-025-E00

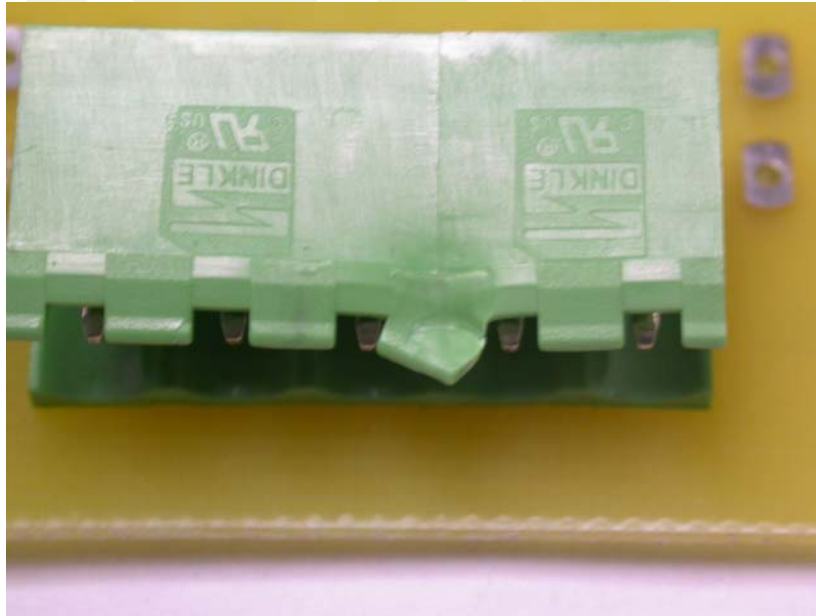


Fig. 5 : Sample 2EHDR-05P#2



Fig. 6 : Sample 2EHDR-05P#3

Electronic Testing Center, Taiwan

c.org.tw

Tester